

# PORTAFLOOR® PRO™

PortaFloor® Pro system is the ideal, versatile, roll-out solution for easily converting your outdoor or indoor facility into a stage for any event. It can be placed over artificial turf, dirt, ice, asphalt, concrete, and many other surfaces. Installation is quick and efficient.



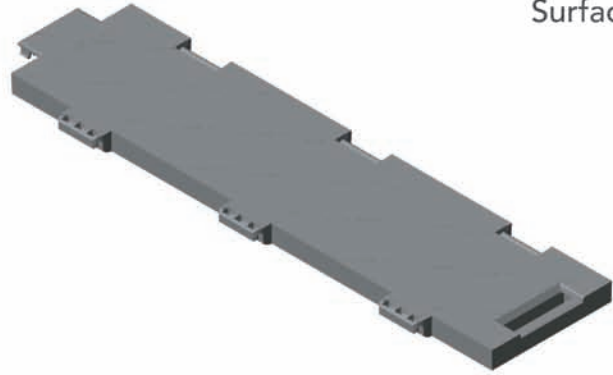
# THE UNDISPUTED **CHAMP** FOR SPECIAL EVENT SURFACE COVERING

Since its inception, PortaFloor has become the world's best known event cover. PortaFloor's unique design gives you an easy to install and economical surface cover. PortaFloor® Pro surface cover is rugged, durable, and easy to store.

## SPECS

<b>SYSTEM TYPE</b>	Modular- High-Impact Polypropylene
<b>TEMPERATURE</b>	-20° F to 150° F use range
<b>COEFFICIENT OF FRICTION</b>	ASTM C1028 Dry/Wet .91/.63
<b>IMPACT RESISTANCE @ -18° C (GARDNER)</b>	ASTM D 5420 320 in/lbs ( 36J )
<b>TREAD SIZE</b>	Unassembled – each tread is 24" long; 6" wide; 29/32" high. Connects to form segments of any size.
<b>WEIGHT</b>	22.4 ounces per tread 14 lbs per 10 sq/ft unit (10 treads); 22.4 oz. per sq/ft
<b>UV STABILIZED</b>	Resistant to color fading and deterioration for 5 years with continuous use
<b>UL RATING</b>	UL 94 HB
<b>LOAD FACTOR</b>	220 psi, max load
<b>COLORS</b>	Granite
<b>CUSTOM COLOR OPTIONS</b>	Black, Hunter Green, Red, Blue, Grass Green, Light Gray

## PortaFloor® Pro Surface Cover



## BENEFITS

- Portable, reusable system
- Rugged and durable
- UV resistant colors
- Economical to use
- Effective in all weather and temperature conditions
- Protects sub-surface



## PORTAFLOOR PRO STANDARD COLOR OPTIONS



Granite

Custom colors available upon request, additional charges & lead time may apply.

NOTE: Color samples are reproduced as closely as possible. They may not represent an exact color match to the PortaFloor Pro surface.

**PORTAFLOOR**  
BY SPORT COURT

800.487.7655

www.portafloor.com

The following organizations have approved and use SPORT COURT® flooring:



Volleyball



Volleyball



Basketball



Futsal



Tennis



Futsal



Tennis

